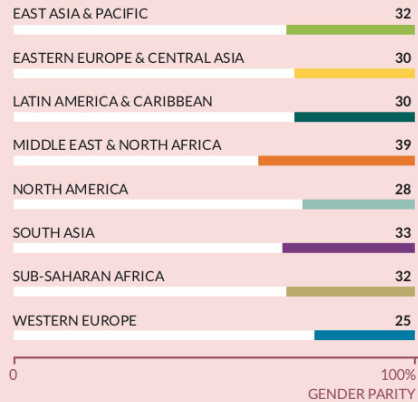


CLOSING THE GENDER GAP

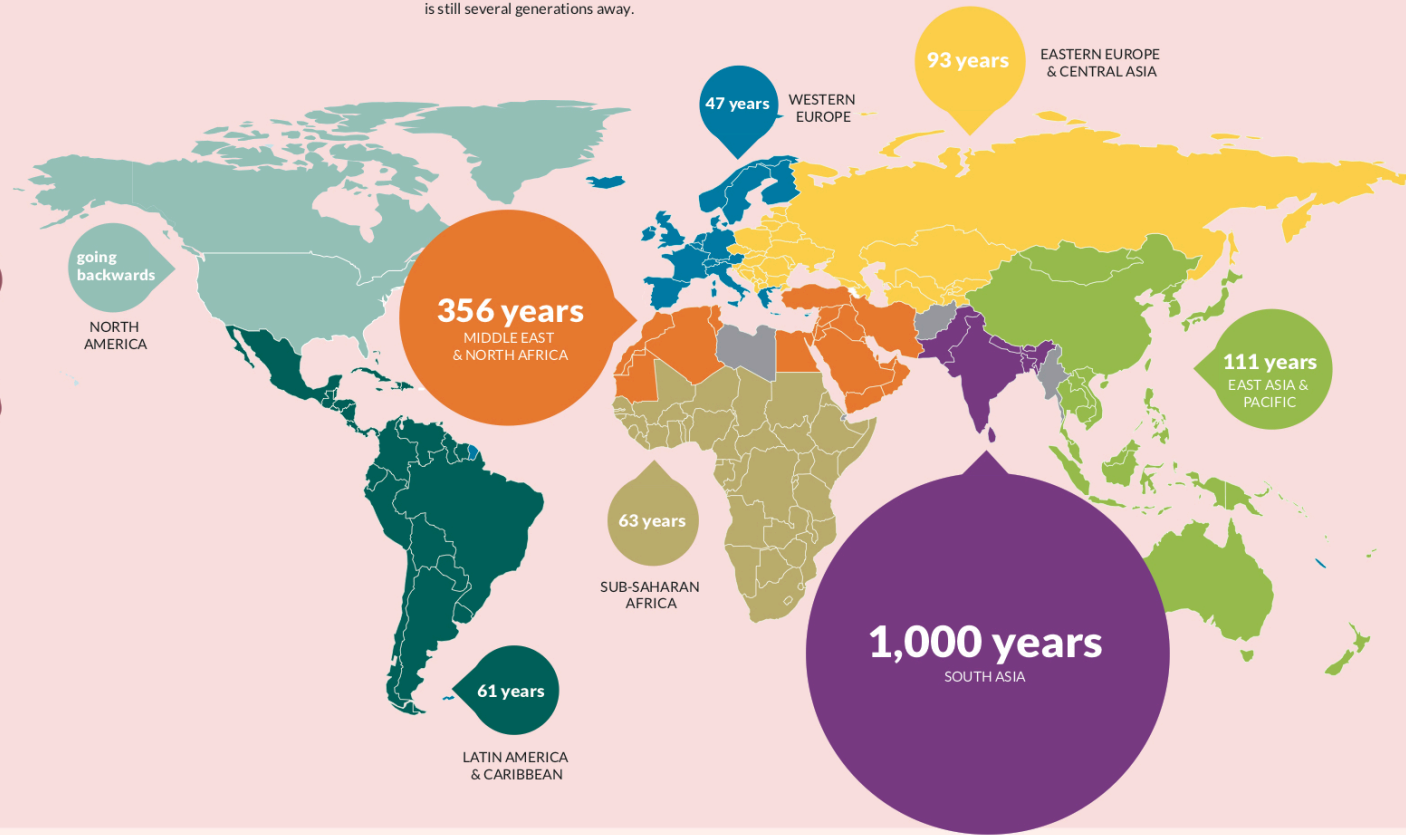
Overall, when it comes to equality between the sexes, things are moving in the right direction. However, they are moving at a very slow pace – in some regions at a glacial pace, according to the World Economic Forum's Global Gender Gap Report.

Distance from gender parity (2016, by region, in percent)



IT COULD TAKE CENTURIES

At its current rate of progress, it could take South Asia an entire millennium to reach gender equality in the workplace. It is not expected to take quite so long in other Asian regions, but equality is still several generations away.



Partnership and maternity

| RANK | 7 | 43 | 55 | 58 | 65 | 71 | 72 | 87 | | |
|------------------------------------|-------------|------|-----------|----------|---------|----------|------------|-------|------|------|
| Country | Philippines | Laos | Singapore | Mongolia | Vietnam | Thailand | Bangladesh | India | | |
| Marriage Divorce Per 1,000 persons | 6.1 | n.a. | 7.3 | 3.4 | 5.7 | 0.2 | 5.5 | 1.4 | 12.5 | n.a. |
| Age at first pregnancy | 29 | 27 | 31 | 30 | 27 | 27 | 25 | 26 | | |
| Average no. of kids p. woman | 3 | 3 | 1 | 3 | 2 | 1 | 2 | 2 | | |
| Maternity leave in days | 60 | 105 | 105 | 120 | 180 | 90 | 112 | 84 | | |
| Paternity leave in days | 7 | 3 | 7 | - | - | - | - | - | | |

| 88 | 99 | 100 | 106 | 110 | 111 | 112 | 116 | 143 |
|------------------------------------|-------|-----------|----------|-------|-------|----------|-------------|----------|
| Indonesia | China | Sri Lanka | Malaysia | Nepal | Japan | Cambodia | South Korea | Pakistan |
| Marriage Divorce Per 1,000 persons | 7.6 | 0.7 | 9.6 | 1.8 | n.a. | n.a. | n.a. | n.a. |
| Age at first pregnancy | 28 | 27 | 30 | 31 | 25 | 31 | 27 | 33 |
| Average no. of kids p. woman | 2 | 2 | 2 | 2 | 2 | 1 | 3 | 1 |
| Maternity leave in days | 90 | 128 | 84 | 90 | 52 | 98 | 90 | 90 |
| Paternity leave in days | 2 | 3 | - | - | - | - | 3 | - |